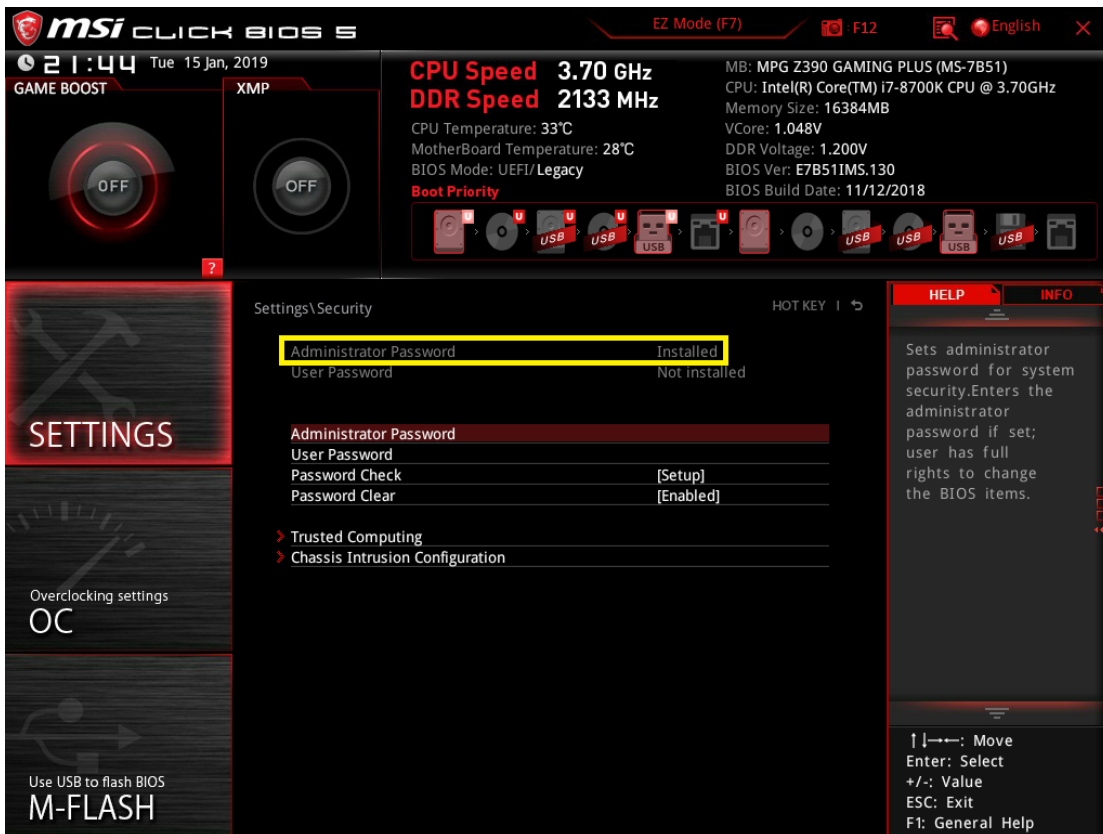
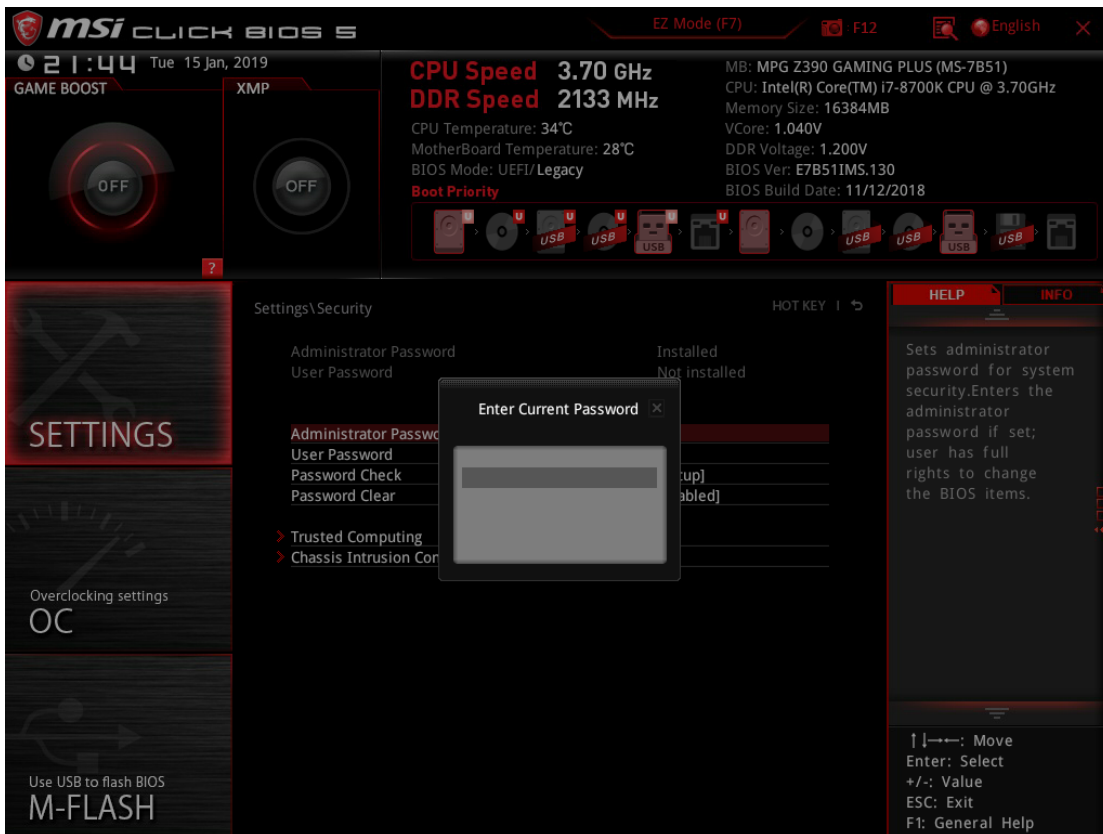


Administrator Password Removal Procedure

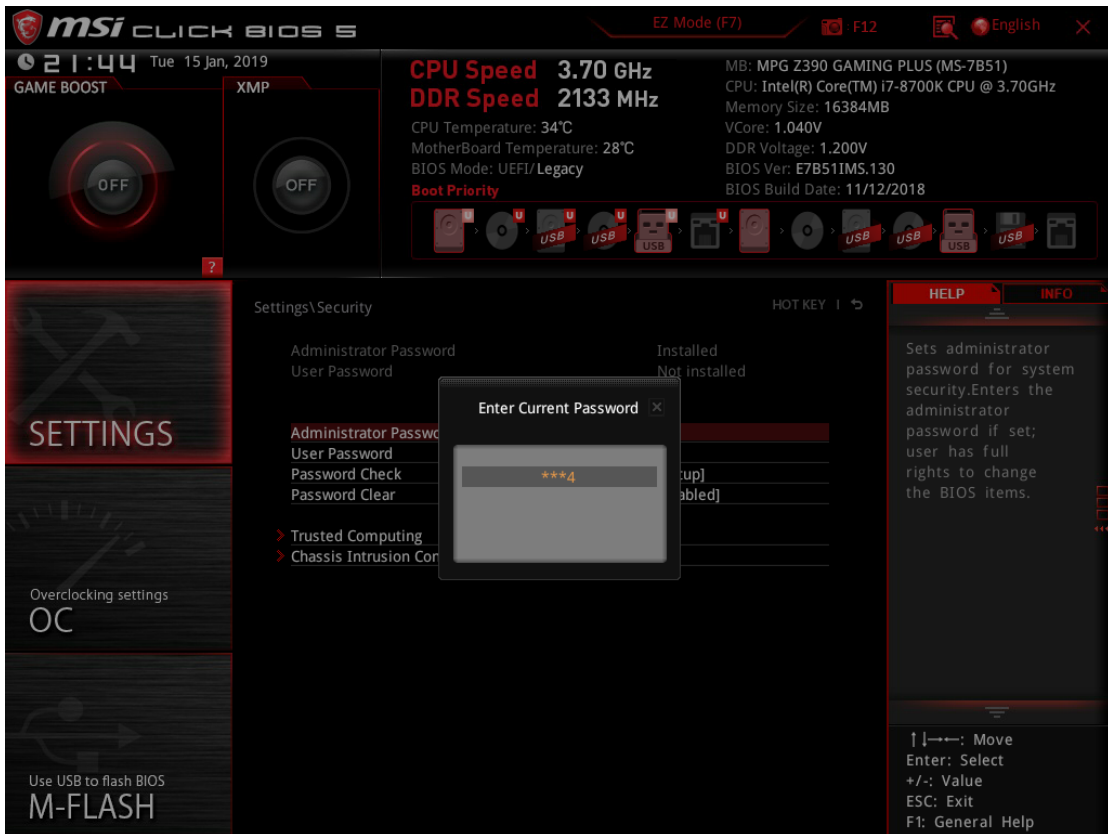
Step 1: Click on Administrator Password



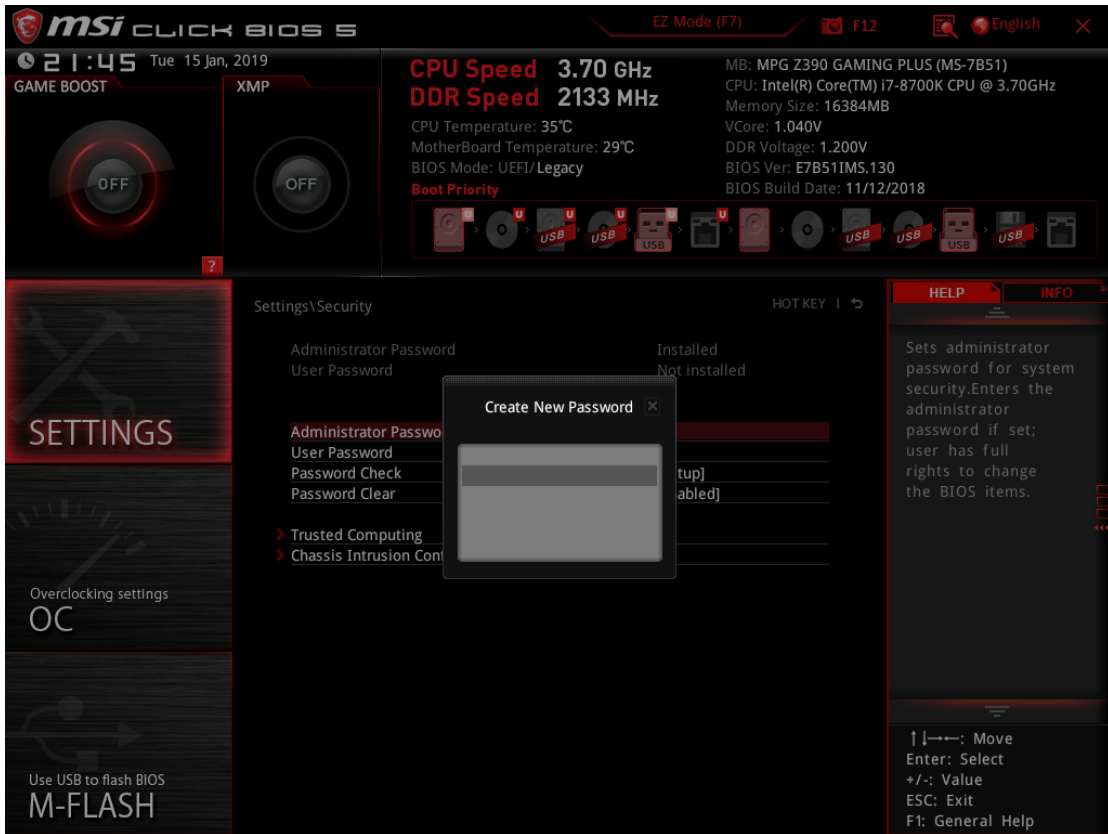
Step 2: Type in the current password



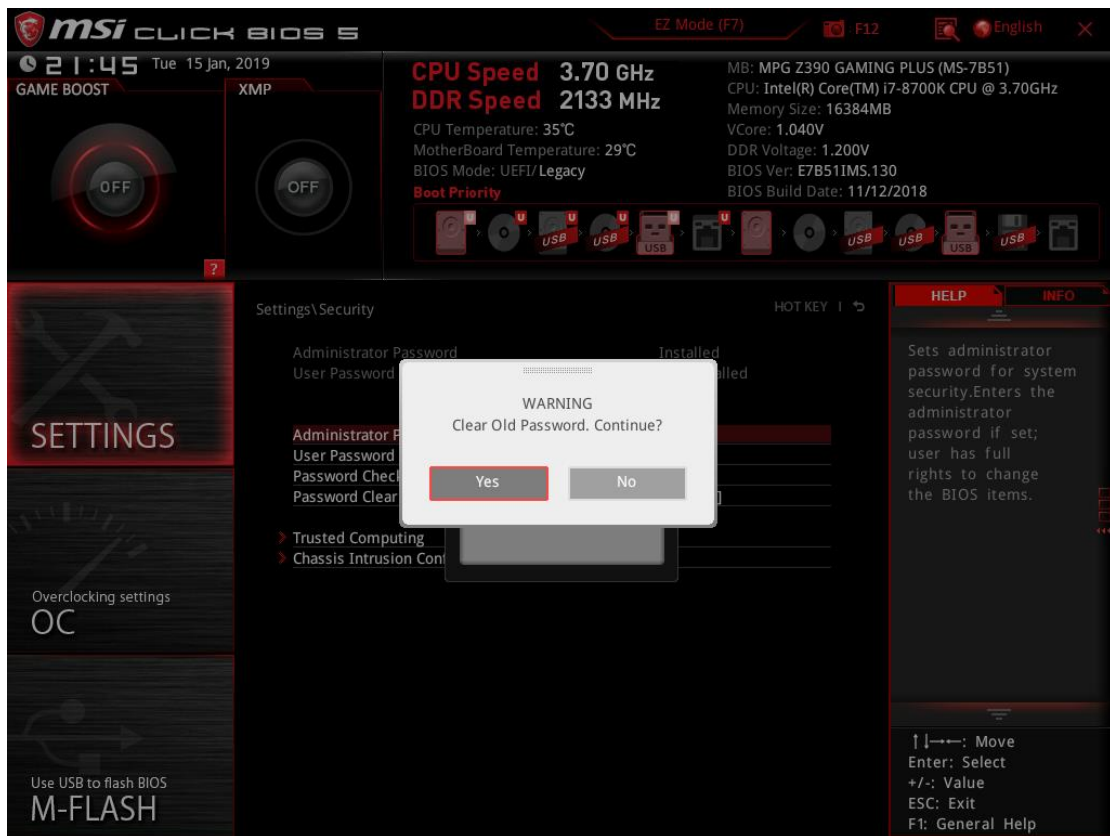
Step 3: Press the Enter key



Step 4: Press the Enter key again to remove the current administrator password



Step 5: Click on **Yes** to clear the old administrator password and press **F10** to save changes made in BIOS



Step 6: Press **Delete** key to enter BIOS during POST, check that Administrator Password has been removed

